

# GE Sensing

## Features

- Save site or set up data to archival files on your PC
- Create data logs
- Retrieve, view and archive data-log files from your instrument
- Set up real time text display windows to read live data from your instrument
- Create, save, and share screen templates to view data quickly and easily in your preferred format
- Create graphs of data-log files or real time data for trend analysis of your process
- Store PC data-log files of any size up to your available hard drive capacity

PanaView instrument interface software is a Windows®-based software package that allows users to communicate interactively with GE instruments. The simple point-and-click interface lets you access the software's many features, such as uploading set-up data to your computer for safe keeping and creating graph templates and log files from one or more instruments. Users can design formats to display graphs, logs and text on screen. Those formats can be saved as templates to standardize the formatting of future data.

# PanaView™ Instrument Interface Software 1.4.7

PanaView is a Panametrics product. Panametrics has joined other GE high-technology sensing businesses under a new name—GE Industrial, Sensing.



# PanaView Specifications

## PC Requirements

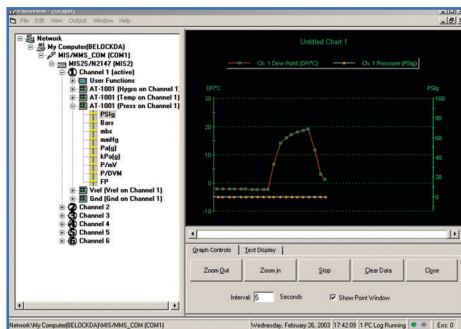
- 64 MB RAM
- 300 MHz Pentium CPU
- Windows 98 SE, Windows NT® 4.0 (SP 6 or higher), Windows ME, Windows 2000 or Windows XP operating systems

## PC Recommendations

Internet Explorer 5.0 or higher

## Supported Interfaces

- RS232
- RS485
- TCP/IP
- IrDA®
- IR232®



PanaView software utilizes a familiar Windows/Explorer style interface so it is easy to navigate. Data can be presented in both text and graphic formats.

## Compatible Instruments

### PanaLink-Protocol Hygrometers

- Moisture Image® Series 1, Moisture Image Series 2 and Moisture Monitor™ Series 3 units with controller board p/n 703-1250
- PM880

### PanaLink-Protocol Flowmeters

- AquaTrans™ UTX878
- DigitalFlow™ IGM878
- TransPort® PT878
- Sentinel™

### PanaLink-Protocol Oxygen/Gas Analyzers

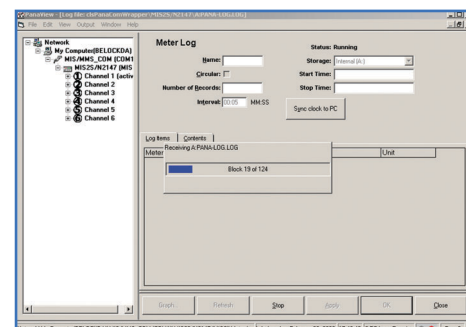
- OxyTrak™ 390

### IDM-Protocol Flowmeters

- AquaTrans AT868
- DigitalFlow DF868, DigitalFlow GC868, DigitalFlow GF868, DigitalFlow GM868, DigitalFlow GN868, DigitalFlow GS868, DigitalFlow XGM868, DigitalFlow XGS868, DigitalFlow XMT868i
- TransPort PT868
- UltraPure Flow™ UPT868-C, UltraPure Flow UPT868-P

### IDM Protocol Oxygen/Gas Analyzers

- XMO2/IDM
- XMTC



PanaView software allows users to manage instrument or PC-based data logs.

©2005 GE. All rights reserved.  
920-017C

All specifications are subject to change for product improvement without notice. AquaTrans™, DigitalFlow™, IDM™, Moisture Image®, Moisture Monitor™, OxyTrak™, PanaView™, PanaLink™, TransPort® Sentinel™ and UltraPure Flow™ are trademarks or registered trademarks of GE. GE® is a registered trademark of General Electric Co. Windows® is a registered trademark of Microsoft Corporation, which is not affiliated with GE, in the U.S. and other countries. Other company or product names mentioned in this document may be trademarks or registered trademarks of their respective companies, which are not affiliated with GE.



**EX-CALIBRA**  
Autoryzowany dystrybutor  
GE Measurement & Control Solutions  
41-400 Mysłowice, ul. Portowa 25  
tel.: 32 2239280, fax: 32 2239281  
e-mail: ex-calibra@ex-calibra.pl  
Internet: www.ex-calibra.pl

[www.gesensing.com](http://www.gesensing.com)