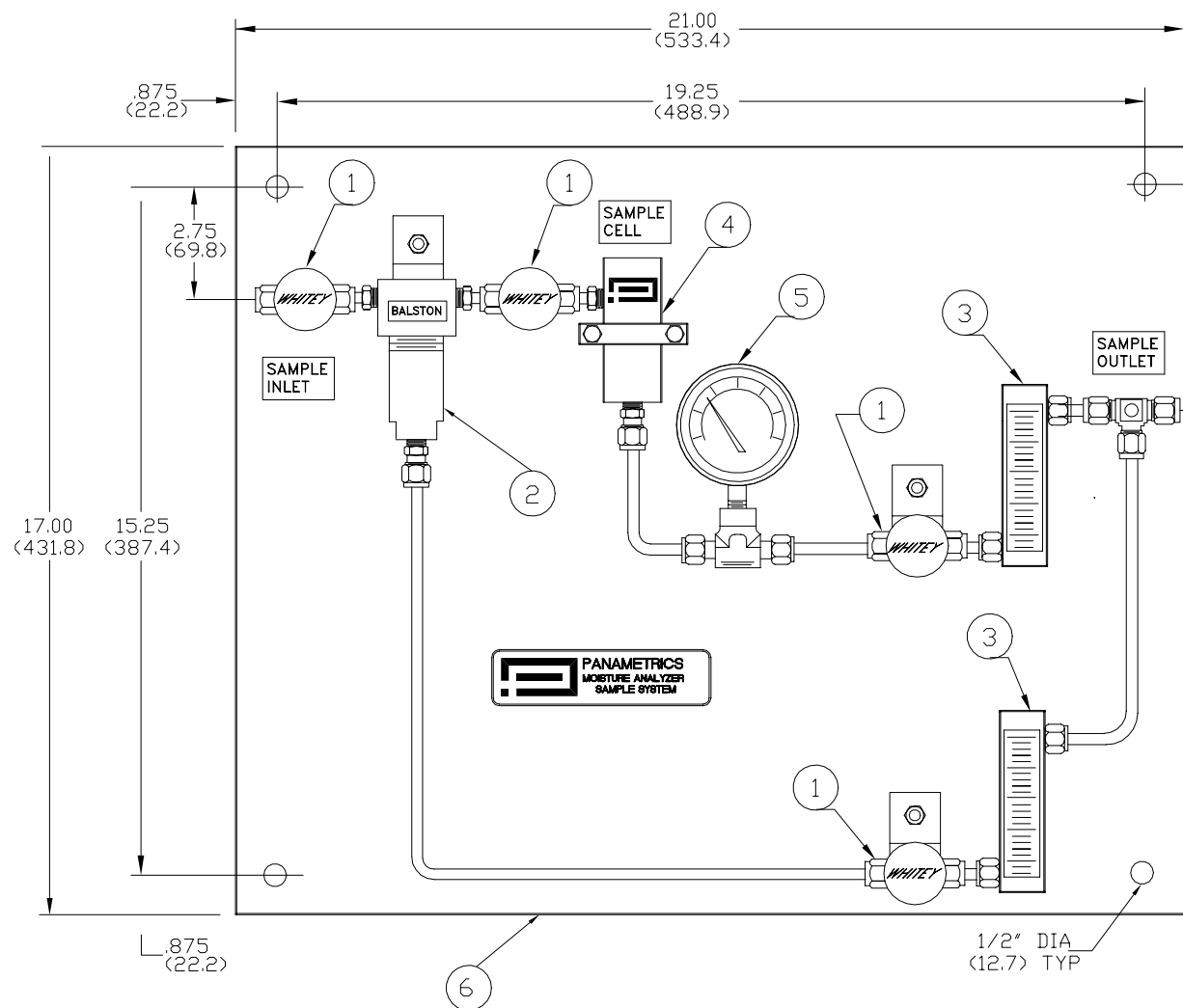


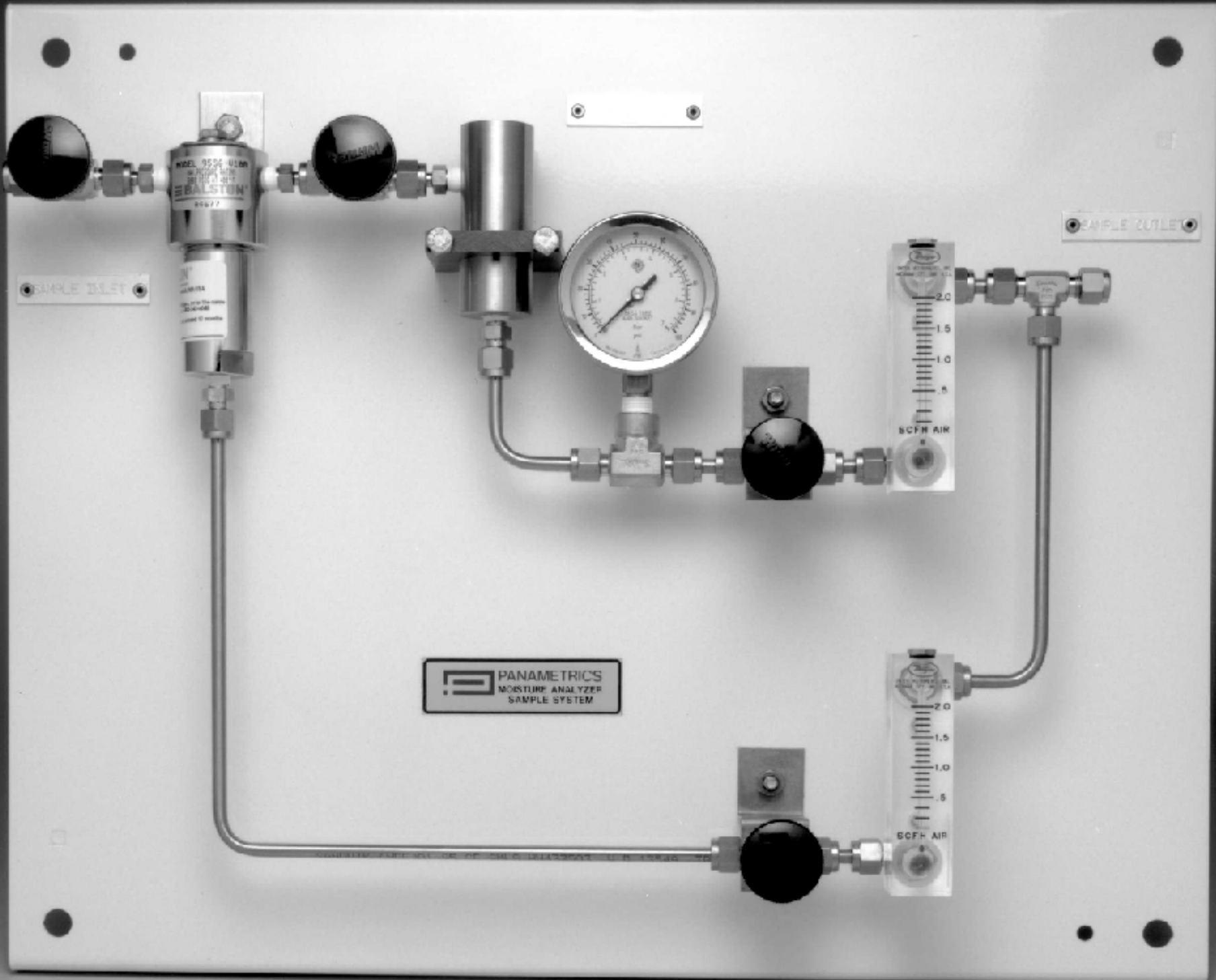
REVISIONS					
REV	ECO	DESCRIPTIONS	DWN	CKD	APVD
1	✓	ORIGINATED	JNR 10/26/2001		



- NOTES:
1. SS10A-0-0
  2. PROCESS CONNS.: 1/4" TUBE FITTINGS
  3. INCHES (MM)
  4. REF. DWG. 732-965BM

UNLESS OTHERWISE SPECIFIED DIMENSIONS ARE IN INCHES TOLERANCES ARE FRACTIONS DECIMALS ANGLES ± .005 ± .01 ± .005 SURFACE FINISH 125 ✓		<b>PANAMETRICS</b> WALTHAM, MASS. 02154-3497	
DRAWN JNR 10/26/2001 ENGINEER		TITLE STANDARD HYDROGEN COOLED GENERATOR MOISTURE SAMPLE SYSTEM	
CHECKED		SIZE <b>C</b>	DRAWING NUMBER 732-965AS
REV <b>A</b>	ECO ✓	MODEL NO. <b>965</b>	SCALE NONE DO NOT SCALE DWG SHEET 1 OF 1
		REV <b>1</b>	



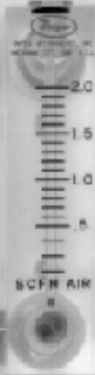


SAMPLE INLET

MODEL 9506 USER  
INSTRUCTIONS  
BY BALLSTON  
94677



SAMPLE OUTLET



PANAMETRICS  
MOISTURE ANALYZER  
SAMPLE SYSTEM

