

# Software

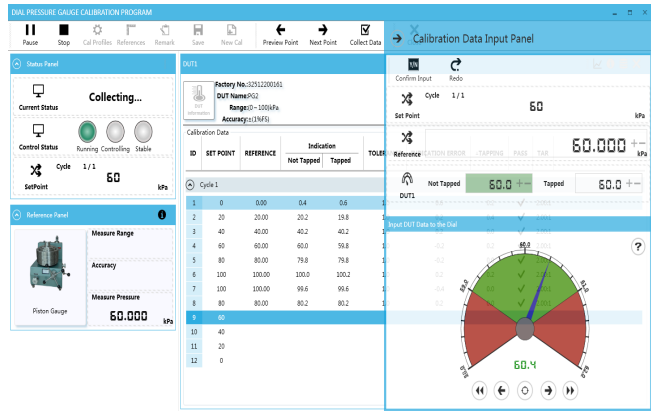
## ACal

Additel ACal is a powerful software package designed to automate or semi-automate pressure calibrations and manage your laboratory. ACal combines the pressure automation features with lab and asset management functions to help make your job easier and more productive. ACal comes in three versions: Basic, Professional, and Network.

ACal Basic supports asset management and task management features. ACal Professional is a single PC installation which combines all the features of Basic with automation functionality. And ACal Network puts the Professional version on a multi-user network platform.

### MAIN FEATURES

- Supports multi-users and network environments
- Calibration and asset management
- Simple user interface
- Scanning and printing of QR codes
- User definable permissions and access levels
- Preset test configurations
- Can calibrate variety pressure instruments
- Can calibrate several instruments at a time
- Calibration planning and scheduling
- Certificate management and creation
- Certificate customization



### SPECIFICATIONS

|                            |  | ACal Network   | ACal Professional | ACal Basic |
|----------------------------|--|--|-------------------|------------|
| Network feature            | Data sharing                                 | √  | ×                 | ×          |
|                            | Multiple users                               | √  | ×                 | ×          |
| Upgrade availability       | Upgrade to ACal Professional                 | N/A  | N/A               | √          |
|                            | Upgrade to ACal Network                      | N/A  | √                 | √          |
| DUT supported              | Type   | Dial gauge<br>Digital gauge<br>Pressure transmitter<br>Pressure switch |                   |            |
|                            | Full automatic calibration                   | √  | √                 | ×          |
|                            | Calibration management                       | √  | √                 | √          |
| DUT management             | DUT info management                          | √  | √                 | √          |
|                            | Calibration due date reminder and scheduling | √  | √                 | √          |
| Reference management       | Reference info management                    | √  | √                 | √          |
|                            | Calibration due date reminder and scheduling | √  | √                 | √          |
| Calibrator Task Management | Task download                                | √  | √                 | √          |
|                            | Task upload                                  | √  | √                 | √          |
| Bar coding                 | Bar code scanning                            | √  | √                 | ×          |
|                            | Bar code creation                            | √  | √                 | ×          |

### ORDERING INFORMATION

| Model Number  | Description  |
|---------------|--|
| 9530-BASIC    | Additel/ACal Automated calibration software with asset management, basic version   |
| 9530-BASIC-L1 | Additel/ACal Automated calibration software with asset management, basic version additional license (9530-BASIC must be purchased prior to any additional licenses)                            |
| 9530-PRO      | Additel/ACal Automated calibration software with asset management, professional version for single PC  |
| 9530-PRO-L1   | Additel/ACal Automated calibration software with asset management, professional version for single PC additional license (9530-PRO must be purchased prior to any additional licenses)         |
| 9530-NET      | Additel/ACal Automated calibration software with asset management, network version, Includes server installation and 1 user license  |
| 9530-NET-L1   | Additel/ACal, Additional License, Automated calibration software with asset management, network version, Includes 1 user license (9530-NET must be purchased prior to any additional licenses) |